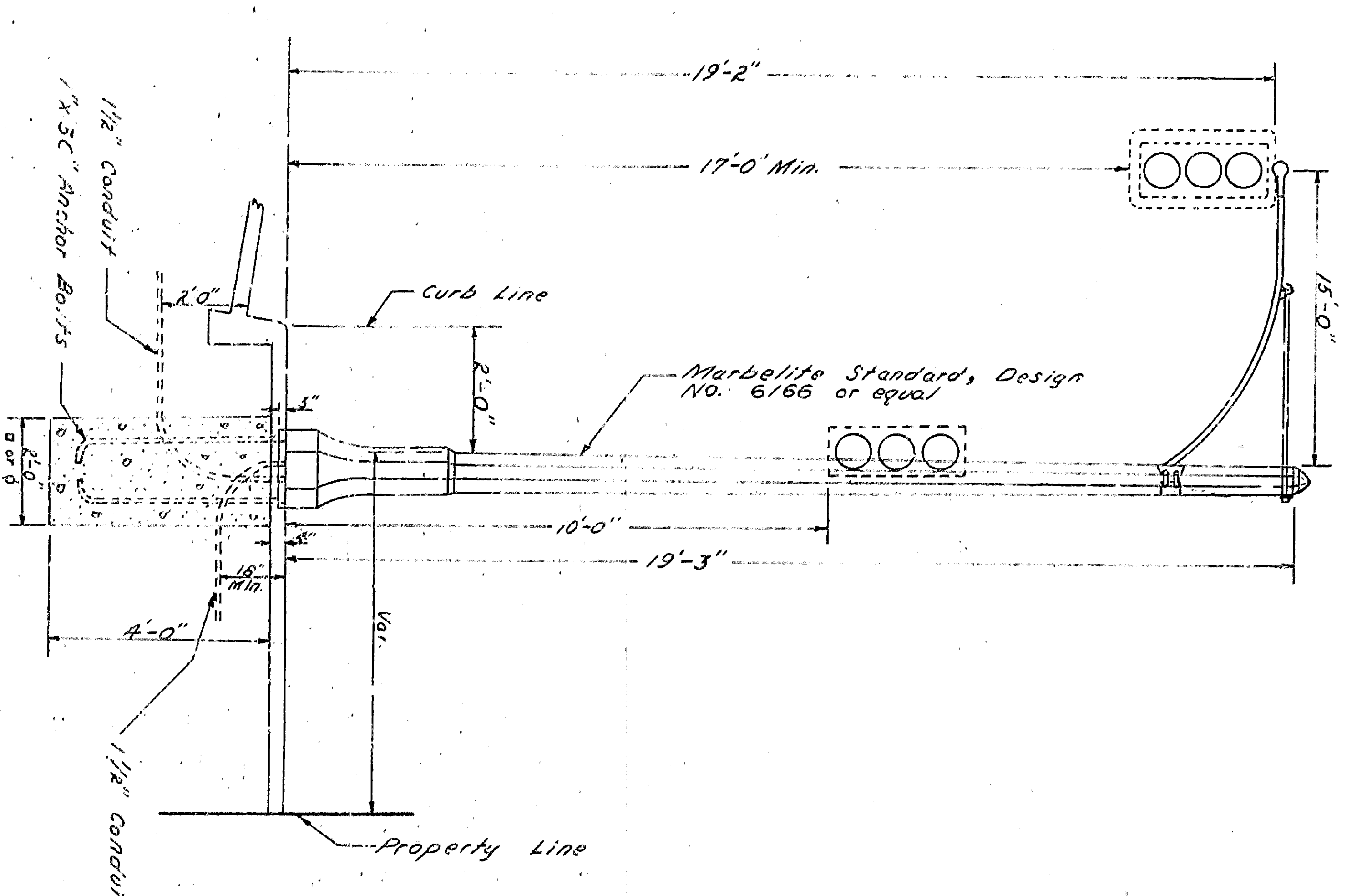
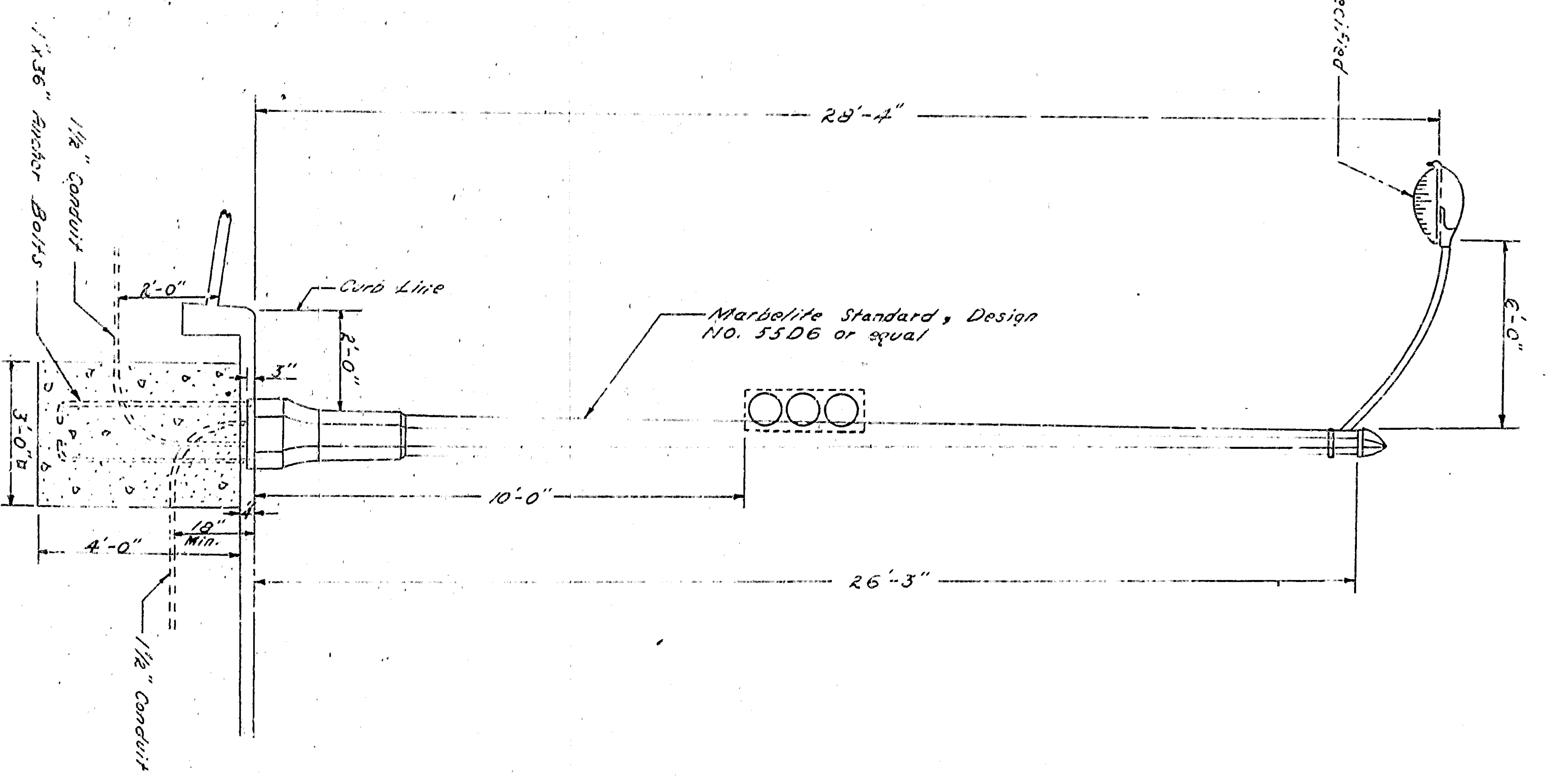


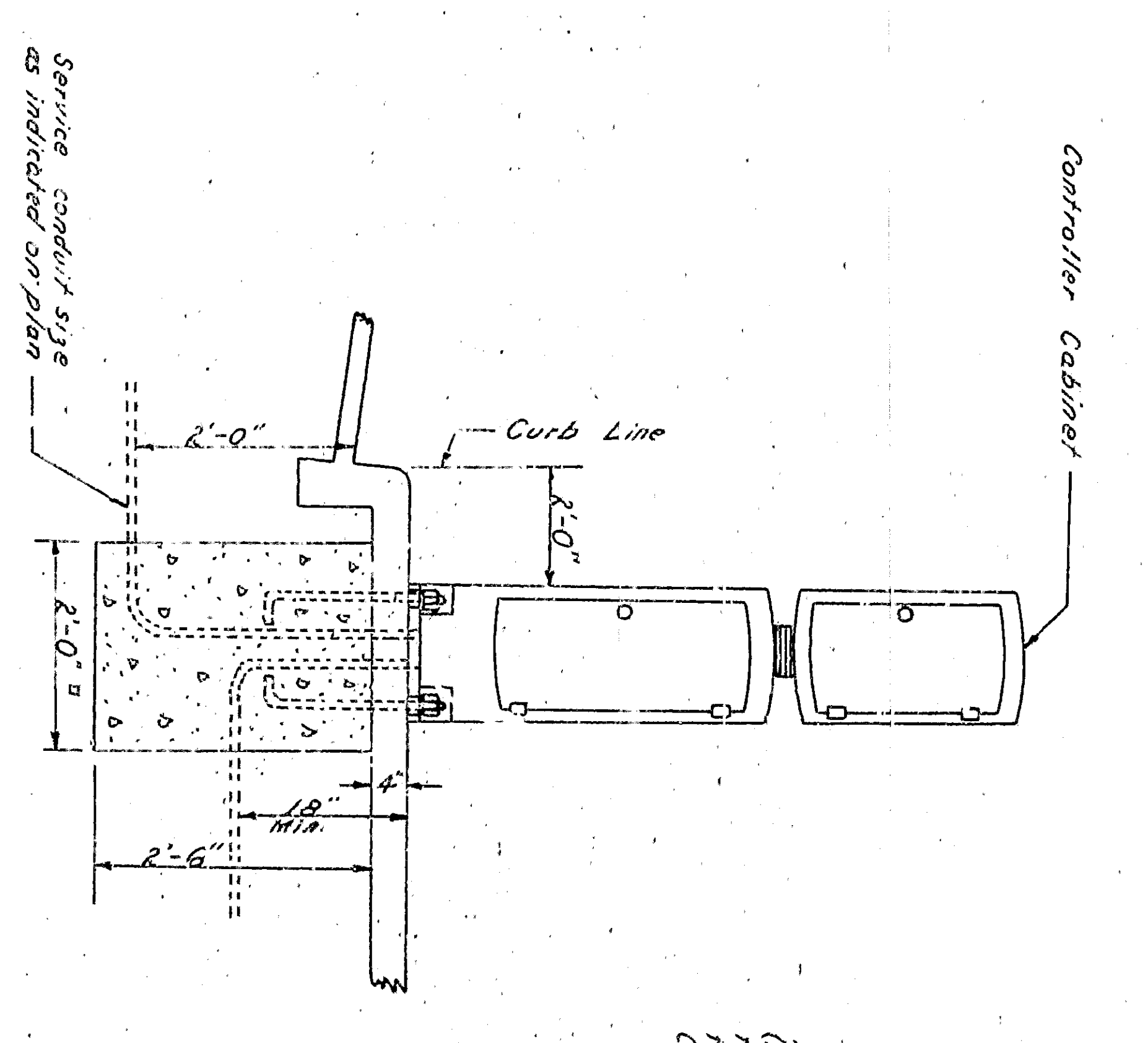
TYPE III(c) STANDARD, as shown, without mast arm signal.



TYPE II(c) STANDARD

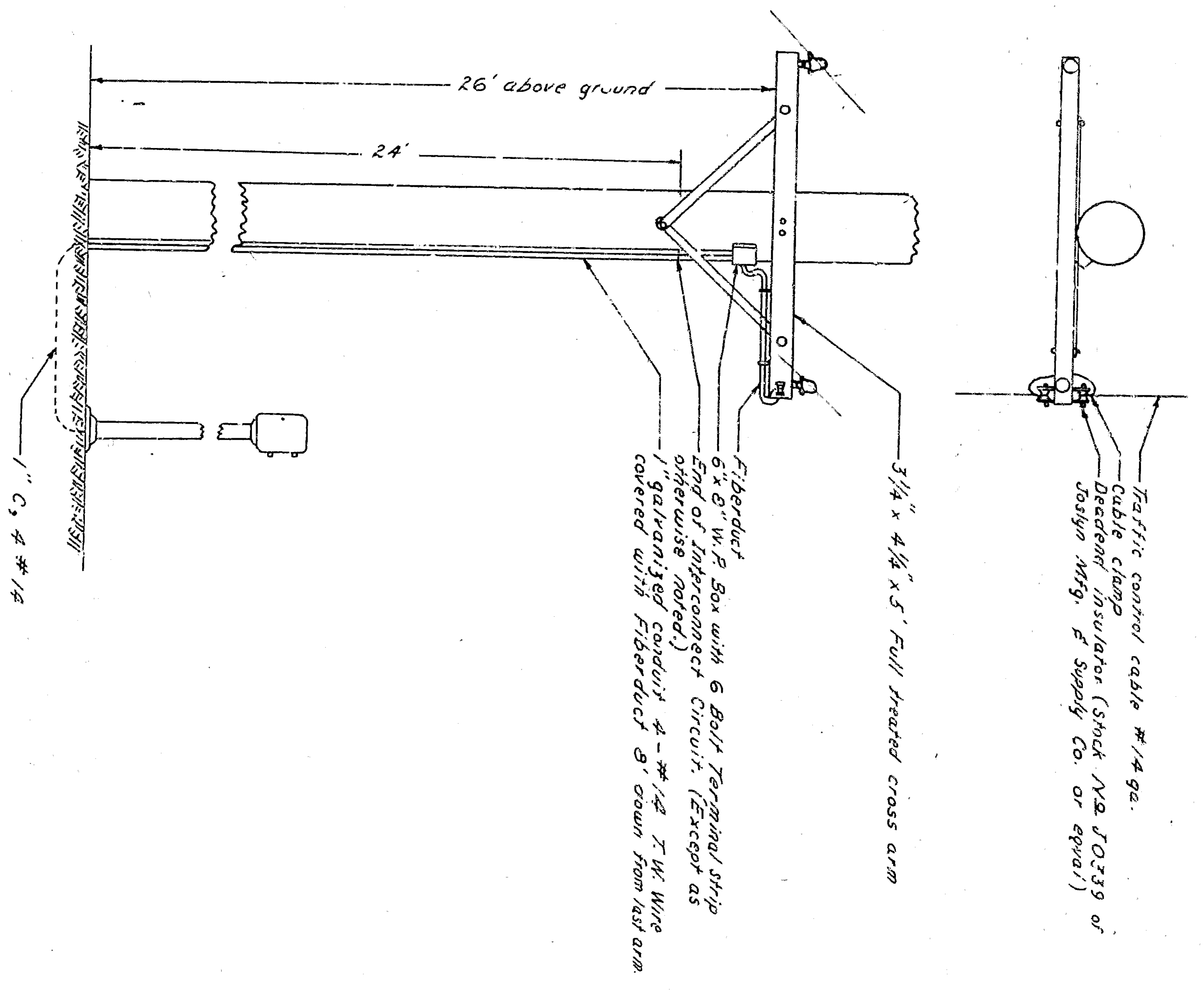


TYPE X(c) STANDARD

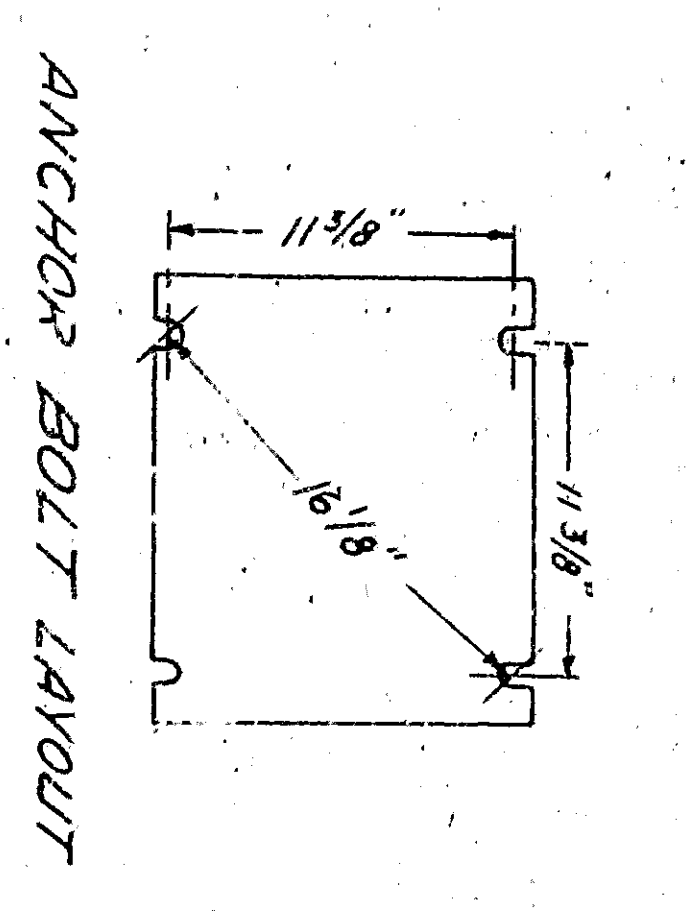


SQUARE PEDESTAL CABINET & BASE

INTERCONNECT DETAILS



Anchor bolts required (Qty) 4 - 3/4" dia. (8 x 1 1/2") spaced 8" on center per side, minimum concrete depth 12" in project K14 above concrete finish. Must use K14's.



APPROVED	CITY ENGINEER	CITY OF SAN BERNARDINO DEPARTMENT OF ENGINEERING
RESIGNED CIVIL ENGINEER NO.	CHECKED BY	
DRAWING NO.	DRAWN BY	STANDARD DETAILS
CHECKED BY	RECOMMENDED	
SHEET 2 OF 2 SHEETS	RECOMMENDED	